

Next Meeting:  
 Thu, Oct 15  
 7-8:30 p.m.  
 Franklin School

# Northwest Neighborhood

Autumn 2009



## Franklin Park Project

BPA's cutting of trees along and within Franklin Park has prompted your Association leaders to propose working with Parks and Recreation to create a pedestrian entry way to Franklin Park off Cherry St that it is framed with cherry trees, shrubs and ground cover.

Let our Volunteer-in-Chief, Leonard Bauhs, know what you think. Our neighborhood is rich in talent and experience. Let's put that to work on this neighborhood project!

## With New Year, Officer Elections

Most of the names listed in the credits on page 2 and the associated faces you see at meetings and the picnics have volunteered their time for nearly half-a-dozen years.

With the new year, we would like to see some new people step up to the challenge.

Leaders and team players needed and wanted!

## CRC looks at toll's impact - we will, too

By Leonard Bauhs

Now that "electronic transponder" and "variable rate toll" have entered our vocabulary, it's time to sit down and talk about the impact of tolls on our crossing to and from Portland.

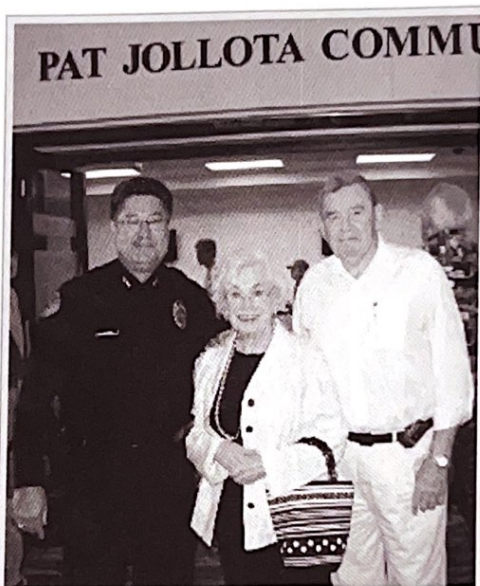
**The use of tolls to help pay** for the biggest of bridges in Washington state is not new.

Some forty thousand vehicles cross the Narrows Bridge outside of Tacoma every day and each is paying \$3 to \$4 at the tollbooths or from \$1.75 to \$2.75 by transponder.

Likewise, payment for the floating bridge on Highway 520 in Seattle will be paid in part by tolls, with weekday rates from \$1.50 to \$3.25 and weekend rates from \$0.80 to \$1.60.

**The CRC Tolling Study Committee** is evaluating technologies, studying tolling scenarios and holding public forums. The committee will report all this to the Washington and Oregon state legislatures and transportation commissions after the first of the year. Setting tolling policy and rates is the responsibility of those governing bodies.

**This Thursday evening** during our quarterly meeting of the NW Neighborhood Association, we will use the CRC survey to discuss how and when we use the bridges that get us across the river and how the various tolling scenarios might affect it.



Pat Jollota (neighbor, cherished story-teller, City Council member and Mayor Pro Tem) was honored early this fall with the unveiling of the "Pat Jollota Community Room" in the newly remodeled West Precinct facility on NE Stapleton and Fourth Plain. VPD Chief Clifford Cook hosted the affair, with Mayor Royce Pollard there to pay tribute to Pat's dedication to Vancouver USA.